



## Apartment Features\*

- Spacious 3 and 4 bedroom floorplans
- Tile flooring throughout
- Washer and dryer in every home
- Fully equipped kitchens with pantry
- Ceiling fans

**Pin Oak Crossing** has all the elements of a great lifestyle at an affordable price. Here, you'll find a tradition of excellence in everything from our impeccable service to our quality construction. Our spacious homes reflect timeless elements of style and are designed with the comfort and convenience you desire.



## Community Amenities

- Single family homes
- Covered carport
- Outside storage
- Spacious lots with front and back yards
- Playground
- Community Room
- 24-Hour Emergency Maintenance
- Professional On-Site Leasing Office / Manager

4705 Natchez Street  
Alexandria, LA 71302

**(318) 445-3530**  
(318) 449-3665 Fax



**[pinalexandria.com](http://pinalexandria.com)**

\*Availability may be limited to select apartments only.  
Subject to change with out notice.



**(318) 445-3530**

**3 Bedroom / 2 Bath**  
**1512 Sq. Ft.\***

**RENT \_\_\_\_\_**

**DEPOSIT \_\_\_\_\_**

**4 Bedroom / 2 Bath RENT \_\_\_\_\_**

**1667 Sq. Ft.\* DEPOSIT \_\_\_\_\_**

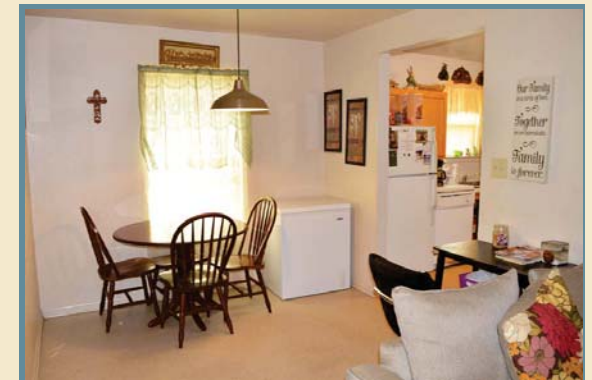
Come discover the peaceful, private, and exciting Pin Oak, where southern charm and grace welcome you, and distinctive style surrounds you.

Our spacious 3 and 4 bedroom homes boast quality features including large kitchens and plenty of closet space. Outside, you'll find spacious lots with front and back yards, a playground, outside storage, and much more.

\*Square footage is approximate Actual floorplans may vary

4705 Natchez Street  
Alexandria, LA 71302

**(318) 445-3530**



**[pinalexandria.com](http://pinalexandria.com)**